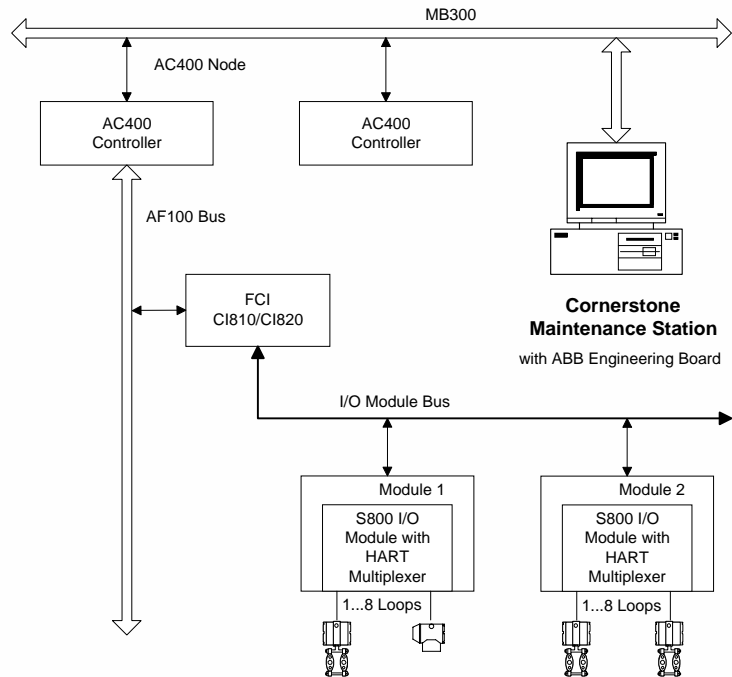




# ABB Advant/AC400 ComLib

- ◆ On-line Interface to HART<sup>®</sup> Instruments
- ◆ Remote Configuration & Diagnosis
- ◆ Automated Database Creation



The Cornerstone **ABB Advant/AC400 Communication Library (ComLib)** provides the software connection between a computer running Cornerstone Base Station or Configurator software and networks of HART instruments connected to the Advant/AC400 control system from ABB Automation.

Communicate with attached HART instruments located throughout your

process facility. Remotely configure, diagnose, trim, maintain, and document your HART devices. Add this solution to current control applications to provide an essential window onto critical instrumentation status.

Use this combined hardware and software solution to achieve dramatic labor savings by eliminating unnecessary trips to the plant floor.

#### Instrument Database:

- ◆ Add instruments upon connection
- ◆ Store recall parameters
- ◆ Access diagnostic information
- ◆ Monitor process variables

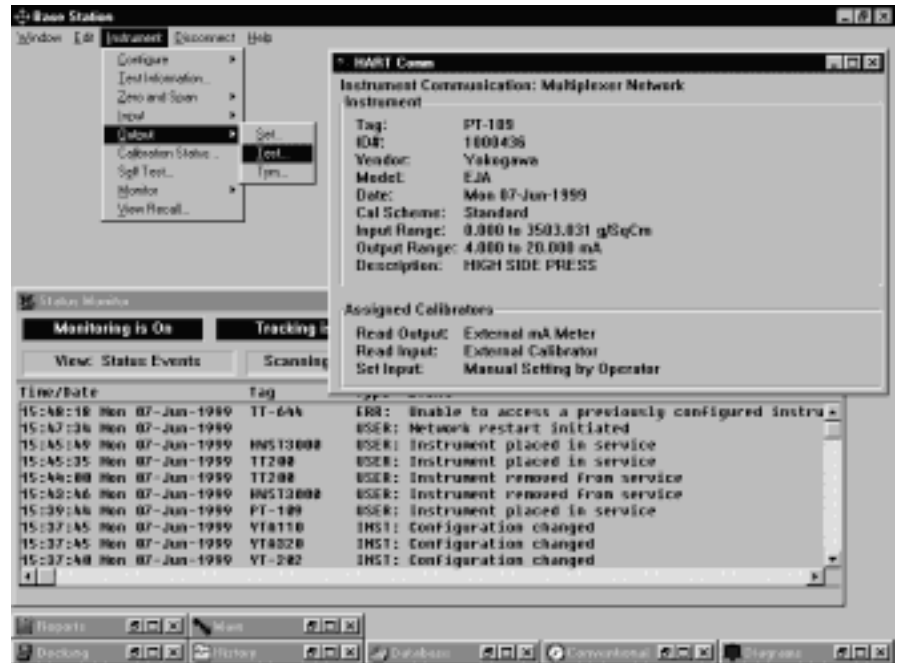
#### With Instrument Status Monitor:

- ◆ "Auto-Learn" all attached devices
- ◆ "Auto-Track" configuration changes

**Cornerstone**<sup>TM</sup>  
*The Open Platform for Instrument Management*

## ABB ComLib Functions

- Network initialization - restarts each multiplexer on the network
- Configure node description, message, communication settings, and scan parameters
- View node status and performance information, and adjust operational parameters
- Enable/disable node operation
- Add/remove instruments from on-line access list
- Add/remove networks and nodes
- Import and export instrument network and node definitions to speed ComLib setup
- Initiate HART multiplexer node self test and display results



## Specifications

- The ABB ComLib software is available in three capacities:

|              | Small | Medium | Large |
|--------------|-------|--------|-------|
| Instruments: | 128   | 2000   | 8000  |
| Networks:    | 4     | 4      | 4     |

## Requirements

- Cornerstone Base Station or Configurator software
- Microsoft Windows NT 4.0, Windows 2000, or Windows XP
- ABB Engineering Board, PU516-PCI or DSPU131-ISA
- ABB AMPL Control Configuration software version 1.8 or later
- ABB Option On-Line Builder version 2.8 or later

## DDE Access to HART Instrument Data

Using the Cornerstone Extended DDE interface, other Windows applications may retrieve HART Process variables, determine device status, read **and write** HART parameters, and receive notification of changes in HART parameters.

## BENEFITS

- Unified instrument data base speeds installation and commissioning
- Remote instrument access reduces operation and maintenance costs
- Knowledge of instrument status and digital process variables complements existing control strategies
- Automated record keeping aids compliance with safety and quality audits

Cornerstone and the Cornerstone logo are trademarks of Applied System Technologies, Inc. The ABB Advant/AC400 System is a product of ABB Automation. Windows is a trademark of Microsoft Corporation. HART is a registered trademark of the HART Communication Foundation.

© Copyright 2005 Applied System Technologies, Inc. All rights reserved. Specifications subject to change without notice.

13 May 2005  
710-00020-003



**applied system technologies, inc.**  
p.o. box 309, dunnellon, florida 34430

Telephone: (352) 465-0201  
WEB: [cornerstone-software.com](http://cornerstone-software.com)