



HART® Smart Instrument Interface

Replaces Handheld Communicators

Instrument Configuration

Instrument Test and Calibration

Integral Instrument Database

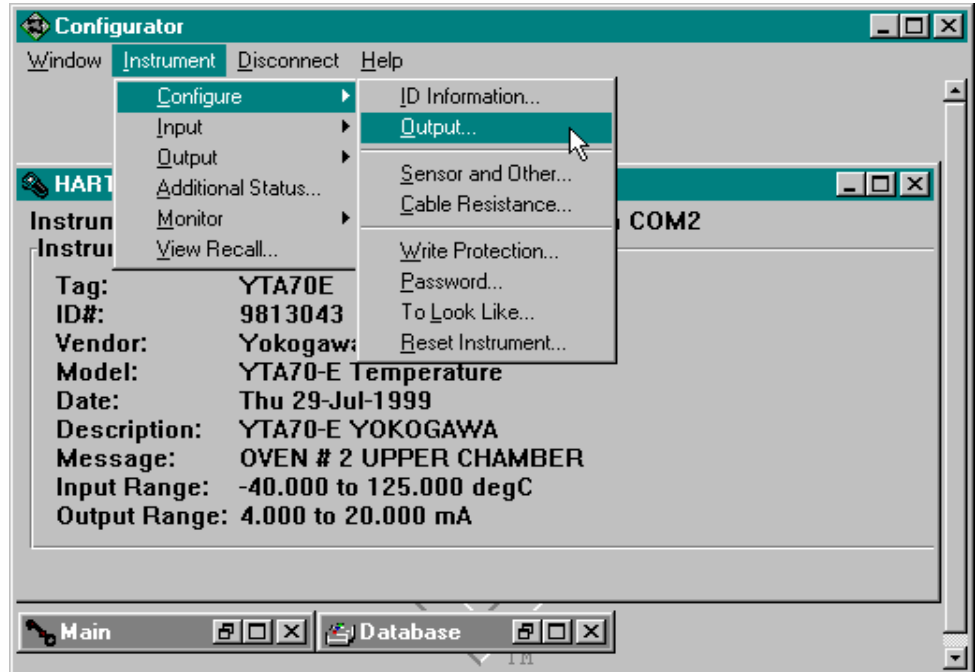
Instrument Connect Automatically Generates Database Records

Exports Instrument Data to Other Applications

Graphical User Interface – Using Microsoft® Windows™

Supports All HART Compliant Instruments

Configurator Software



Cornerstone Configurator software is a personal computer based alternative to HART hand-held communicators. Using any of several standard HART modems, connect Configurator anywhere in the HART instrument loop to **configure, test, calibrate, and run diagnostic functions** as typically performed with a hand-held "programmer" device. Build your instrument data base automatically just by connecting to the loop. Configurator will add the device to the data base, plus update the instrument record with any changes you make.

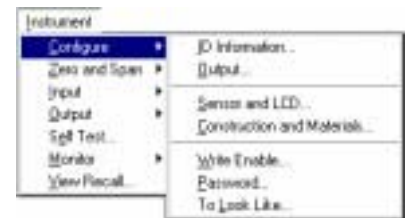
Configurator software gives you HART Universal and Common Practice access to any fully compliant HART device for basic configuration (Tag, Description, Message, etc.), for re-ranging and units assignment, and for status retrieval. You can choose, if needed, to access device specific parameters and functions through optional Cornerstone model support libraries.

Configurator's presentation is very easy to learn. If you know how to use any other Windows application, then you basically already know how to move through Configurator's windows and menus. Configurator uses the larger display space to your advantage to logically group instrument data and the functions related to that data. You no longer have to suffer the hand-held limitations of small screen size and limited keyboard that make their use tedious, frustrating, and mistake prone.

Cornerstone[™]
The Open Platform for Instrument Management

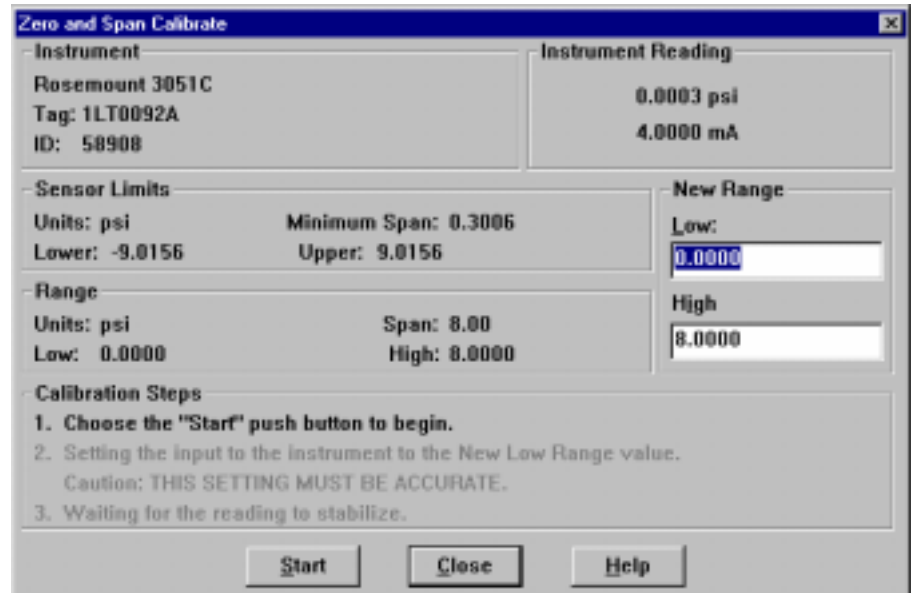
Instrument Connection

- Direct connection to the instrument or the loop
- Point-to-point and multidrop HART addressing
- Instrument data automatically read upon connection
- Summary information display while connected
- Menu access to operational functions, including "Reset"
- Menu oriented configuration of instrument parameters
- HART multimaster protocol support
- Polled and burst modes of HART communication
- Dynamic monitor of process variables (PV, SV, TV, QV) and instrument status
- Diagnostic display of commands and responses
- Extensive error detection and interpretation



Test and Calibration

- Structured, step-by-step test and calibration
- Instrument specific tests and calibrations contained in optional model support libraries
- Generic (Universal) Test and Calibration functions:
 - Zero & span adjust
 - Sensor input zero trim
 - Set instrument output to perform loop calibrations
 - Current loop output trim
 - Instrument self-test



User Interface

- Runs in Microsoft Windows
- Universally accepted menu format
- Easy to learn to use
- Simple functional layout to communicate or use the database
- Logically arranged instrument data displays and function selections
- Advantage of large screen size and full keyboard
- Optional mouse, trackball, or other pointing device

Instrument Data Base

- Integral instrument data base
- Stores all instrument parameters plus management information
- Instrument capacity is limited only by disk space

Data Base Management Functions

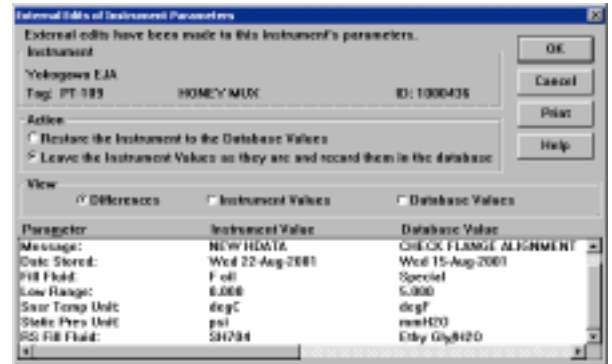
- Automatic addition of new instrument on connection
- Copy specifications of an existing instrument into a new instrument



- Off-line manual addition of new instruments
- Delete instruments
- Assign instrument to user defined "Groups"
- Select instruments based upon search criteria - vendor, model, group
- Off-line instrument configuration edits
- Reconciliation of off-line edits with on-line instrument configuration upon connection
- Export instrument data in CSV file format for import to other Cornerstone products or to other programs like Microsoft Access or Excel

Data Base Reporting Functions

- Individual instrument configuration reports
- Instrument database listing



2000 COMPLIANT!
Configurator software uses four digit years and is fully functional in 2000 and beyond.

Help and Documentation

- Help is always available
- Automatically presents the Help screen that directly relates to your current activity in the program
- Complete glossary and cross reference
- Table of contents, search and browse access from all screens
- Comprehensive User Manual parallels online Help organization
- User Manual contains graphic screen pictures and illustrates menu choices



Cornerstone Product Family

- Configurator is one of the Cornerstone family of instrument management products
- Configurator database is upward compatible with other Cornerstone products
- Cornerstone family includes more comprehensive programs for:
 - Automated test and calibration
 - Configuration and test/cal history records
 - I/O and connectivity options
 - Direct calibrator interfaces
 - Status monitoring & alerts
 - Additional features to meet quality system standards

Benefits

Improve Instrument Management

- Keep all smart instrument configuration data in a single data base
- Document instrument configurations to meet quality standards like ISO 9000
- Automatic registration of instrument configurations into the data base - just by connecting

Reduce Equipment and Labor Costs

- Save time and money by "cloning" one set of instrument parameters into another
- One software product - Configurator - provides maintenance support for instruments from multiple vendors
- PC keyboard, full screen displays, and optional mouse make function selection and data entry easier and more reliable
- Configurator is easily upgraded to support new vendors and new instruments

Applied System Technologies, Inc. is an active charter member of the HART Communication Foundation.

HART Instrument Support

Configurator provides support for most Universal and Common Practice commands for any 100% HART compliant instrument.

Transmitter Specific Support

Additional support for transmitter specific features is provided by optional Model Support Libraries. The following are currently available:

ABB Automation

600T	KST	Deltapi KDP
TS11	TEU 211	AS800
TZID	TH02	50XM1000B

Foxboro -Eckardt

DMU 130 DMU 140

Honeywell

ST3000 STT25H STT25T

Moore Products

340_A	340_B	340_D
340X	341_D	344

Rosemount

1151S	2054C	2054pH
2054T	2081pH	2088
2090	3051x	3001x
3044C	3044CR	3144
3244MV	644	8712C
8712H	8800	9701
9703	9712	9739

Siemens

SIPART PS2 Positioner

SMAR International Corporation

LD301 TT301

Tyco

SmartCal Positioner

Westlock Controls

ICoT ICoT5000 Positioners

Yokogawa Electric Corporation

EJA	YT200	YEFLO
ADMAG-AM11, -AE, -SE		
YTA70	YTA110	YTA3x0

Others - are available now or will be added - check for availability.

Computer Platform

Hardware Requirements

PC compatible computer with:

- Processor - as required for good Windows performance
- RAM memory - size as required by Windows version used
- CD-ROM drive
- Hard disk drive - size as required by Windows, plus 10 MB
- Monochrome or Color monitor - SVGA or higher resolution
- Serial port or PCMCIA slot for HART interface.
- Optional - Windows compatible pointing device and interface port, Windows compatible printer, and serial or parallel printer port.

Software Requirements

One of the following:

- Microsoft Windows 98
- Microsoft Windows NT
- Microsoft Windows 2000
- Microsoft Windows XP

HART Modem

Cornerstone Configurator requires a HART compatible or Bell 202 modem. Several such modems have been certified for operation with Configurator software. One of these, the Viator from MACTek, may be purchased with the Configurator software from your Cornerstone product supplier. Viator is available with a serial interface or on a PCMCIA card.

Cornerstone is a trademark of Applied System Technologies, Inc. Windows is a trademark of Microsoft Corporation. HART is a registered trademark of the HART Communication Foundation.

© Copyright 2005 Applied System Technologies, Inc. All rights reserved. Specifications subject to change without notice.

13 May 2005
700-000002-007



applied system technologies, inc.

p.o. box 309, dunnellon, florida 34430

Telephone: (352) 465-0201
WEB: cornerstone-software.com